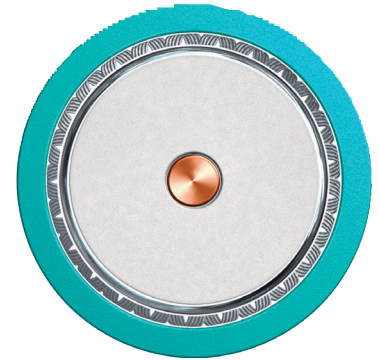


EventSeries® 4K Ultra High Definition HD1000 Serial Digital Video Cable 75 Ohm LSZH FireFighter®



Application

Event® Series HD Series Digital 75 Ohm video cables for the professional broadcaster provide high performance 4K signal transmission on a single coax reducing weight and space used significantly.

These cables have been engineered to exceed the SMPTE Return Loss (RL) requirements for UHDTV and optimising transmission distance.

- 12G-SDI SMPTE2082-1 4K Cinema UHDTV-1, UHDTV-2
- 6G-SDI SMPTE2081-1 4K Cinema UHDTV-1, UHDTV-2

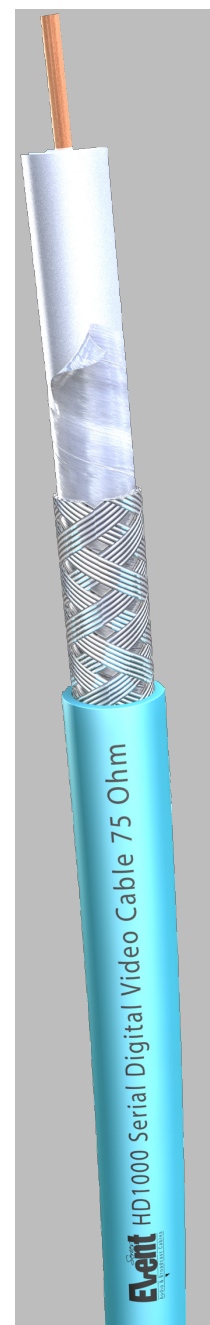
or use in Public buildings, schools, government & marine applications .

Cable Design

Conductor	Solid bare copper wire : 1 x 1,0 mm
Dielectric	Gas injected Polyethylene - physical foam
Screen	Aluminium/Polyester/Aluminium
Shield	Tinned copper braid, 95% coverage
Outer Jacket	LSZH FireFighter® IEC 60332-1
Colour	See specification table

Characteristics

- Flame Retardant acc. to IEC 60332-1
- Halogen Free acc. to IEC 60754
- Smoke Density acc. to IEC 61034



EventSeries[®] 4K Ultra High Definition

HD1000 Serial Digital Video Cable 75 Ohm LSZH FireFighter[®]

Electrical Data

Characteristic Impedance	75	± 1 Ω
Screening Factor	≥ 100	dB
Velocity Propagation	83	%
D.C.R Inner Conductor	22,0	Ω/km
D.C.R Outer Conductor	7,0	Ω/km
Mutual Capacitance	56	pF/m
Return Loss upto 2.5 GHz	> 20	dB
Return Loss 2.5 GHz upto 4.5 GHz	> 14	dB
Return Loss 4.5 GHz upto 12 GHz	> 13	dB

Frequency		Attenuation	
1.0	MHz	0.7	dB/100m
3.6	MHz	1.5	dB/100m
10	MHz	2.2	dB/100m
71.5	MHz	5.2	dB/100m
135	MHz	7.0	dB/100m
180	MHz	8.1	dB/100m
270	MHz	9.9	dB/100m
360	MHz	11.4	dB/100m
540	MHz	14.1	dB/100m
720	MHz	16.4	dB/100m
1000	MHz	19.5	dB/100m
1500	MHz	24.4	dB/100m
2250	MHz	30.6	dB/100m
3000	MHz	36.4	dB/100m
6000	MHz	54.3	dB/100m
12000	MHz	83.6	dB/100m


EventSeries® 4K Ultra High Definition

HD1000 Serial Digital Video Cable 75 Ohm LSZH FireFighter®

HD600 Maximum Transmission Distance Calculated - Metres

SMPTE ST 259				SMPTE ST 292	SMPTE ST 424	SMPTE ST		
143 Mb/s	177 Mb/s	270 Mb/s	360 Mb/s	1.5 Gb/s	3.0 Gb/s	425.4 3 Gb/s	2081-1 6 Gb/s	2082-1 12 Gb/s
Composite NTSC	Composite PAL	Comp. 4:3 SD-SDI	Widescreen 16:9 SD-SDI	HD-SDI 1080i 1.5G-SDI	HDSDI 1080p 3G-SDI	UHDTV-1 UHD TV2		
515	461	384	330	122	82	156	90	74

Specification

Cross Section	Part Number	Overall Diameter [mm]	Colour
	HD1000-13	6,60 ± 0,50	Turquoise
	HD1000-10	6,60 ± 0,50	White
	HD1000-01	6,60 ± 0,50	Black

Belcom Cables Ltd. ("Belcom") reserves the right to make changes to the product described in this specification without prior notice. Belcom does not assume any liability which may occur due to the use of the specification described herein. Drawings are not to scale unless otherwise specified and are provided for general and informational purposes only. All values represented in this specification should be used as a guide only and exact product details can be confirmed at point of enquiry.